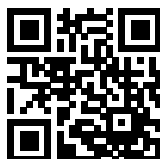


FN2522-10-05-C1111

SAP Code: 822970

- Chassis mount
- 10 A EMC filter with fast-ons
- 1 Phase

[Buy article now](#)


Family Technical Specifications

Operating frequency	DC to 60 Hz
Climatic category	FN2500: 40/100/21 acc. IEC60068-1
Pollution degree	2 acc. IEC 60664-1
Vibration and shock	3M12 acc. IEC 60721-3-3
Overvoltage category	II acc. IEC 60664-1
Temperature range (operation and storage)	FN2500: -40°C to +100°C (with derating >50°C) FN2520: -40°C to +85°C (with derating >50°C)
Overload capability	1.5 x rated current for 1 minute once per hour
Cooling	Natural cooling AN
Flammability corresponding to	Plastic material: UL 94 V0 Laces for -07 version: UL 94 VW1
Surge withstand	2 kV Ph-Ph / 4 kV Ph-PE (Level 4)
High potential test voltage	P(DC+) -> N(DC-) 1500 VDC for 2 sec* P(DC+)/N(DC-) -> PE 2500 VDC for 2 sec*
Rated operating voltage	277 VAC / 400 VDC (CQC: 250 VAC / 250 VDC)
Altitude	Derating above 2000 m
Certified to	UL/IEC 60939-3, CSA 22.2 No. 8-13, GB/T 15287
MTBF	> 300,000 h
Rated currents	10
Protection category	IP00 / IP20 for -103 terminals

Approvals & Compliances



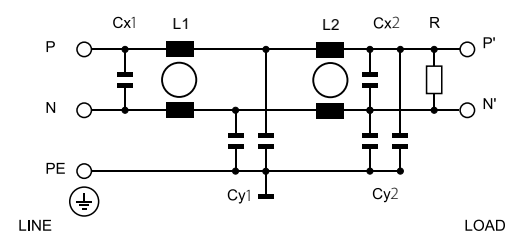
Features and Benefits

- FN2520 series fits perfectly within 1HU height for rack mount applications
- The filters are built to perform perfectly in datacenter and audio video equipment
- The shape allows convenient and space-saving installation
- Fulfills the requirements in IEC/EN 62040-1 - Uninterruptible power systems (UPS)
- Fulfills the requirements in IEC 62368-1 - Audio/Video, Information and Communication Technology Equipment
- Fulfills the requirements in IEC/EN 60335-1 - Household and similar appliances

Typical Applications

- Datacenter (at 400 VDC)
- Building technology with DC power distribution
- Robotics, collaborative robots, autonomous machines
- Audio and video equipment
- UPS - Uninterruptible power supplies

Typical electrical schematic



General Specification

Voltage AC	277 (Volt)
Nominal Frequency	50
Rated Current @ambient	10
Ambient temperature [°C]	50

Electric Specification

Leakage current (IEC60939) [mA]	0.82
Input terminal	05 - faston 6.3x0.8
Output terminal	05 - faston 6.3x0.8

Attenuation Specification

CM attenuation @ 150kHz [dB]	76 (Decibels)
------------------------------	---------------

Mechanic Specification

Length [mm]	149.4
Width [mm]	73
Height [mm]	35
Volume [cm ³]	382 (Cubic Centimeter)
NetWeight [g]	418 (Gram)

Schaffner schemes

Dimensions