

FN2520-25-08-C1111

SAP Code: 821826



- Chassis mount
- 25 A EMC filter with screw terminals
- 1 Phase

[Buy article now](#)


Family Technical Specifications

| | |
|--|---|
| Operating frequency | DC to 60 Hz |
| Climatic category | FN2500: 40/100/21 acc. IEC60068-1 |
| Pollution degree | 2 acc. IEC 60664-1 |
| Vibration and shock | 3M12 acc. IEC 60721-3-3 |
| Overvoltage category | II acc. IEC 60664-1 |
| Temperature range (operation and storage) | FN2500: -40°C to +100°C (with derating >50°C) FN2520: -40°C to +85°C (with derating >50°C) |
| Overload capability | 1.5 x rated current for 1 minute once per hour |
| Cooling | Natural cooling AN |
| Flammability corresponding to | Plastic material: UL 94 V0 Laces for -07 version: UL 94 VW1 |
| Surge withstand | 2 kV Ph-Ph / 4 kV Ph-PE (Level 4) |
| High potential test voltage | P(DC+) → N(DC-) 1500 VDC for 2 sec* P(DC+)/N(DC-) → PE 2500 VDC for 2 sec* |
| Rated operating voltage | 277 VAC / 400 VDC (CQC: 250 VAC / 250 VDC) |
| Altitude | Derating above 2000 m |
| Certified to | UL/IEC 60939-3, CSA 22.2 No. 8-13, GB/T 15287 |
| MTBF | > 300,000 h |
| Rated currents | 25 |
| Protection category | IP00 / IP20 for -103 terminals |

Approvals & Compliances



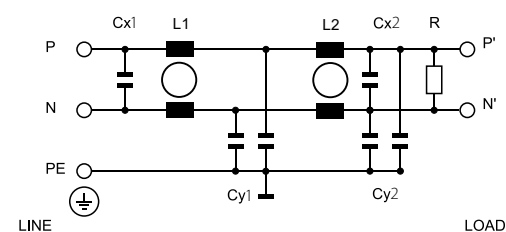
Features and Benefits

- FN2520 series fits perfectly within 1HU height for rack mount applications
- The filters are built to perform perfectly in datacenter and audio video equipment
- The shape allows convenient and space-saving installation
- Fulfills the requirements in IEC/EN 62040-1 - Uninterruptible power systems (UPS)
- Fulfills the requirements in IEC 62368-1 - Audio/Video, Information and Communication Technology Equipment
- Fulfills the requirements in IEC/EN 60335-1 - Household and similar appliances

Typical Applications

- Datacenter (at 400 VDC)
- Building technology with DC power distribution
- Robotics, collaborative robots, autonomous machines
- Audio and video equipment
- UPS - Uninterruptible power supplies

Typical electrical schematic



General Specification

| | |
|--------------------------|------------|
| Voltage AC | 277 (Volt) |
| Nominal Frequency | 50 |
| Rated Current @ambient | 25 |
| Ambient temperature [°C] | 50 |

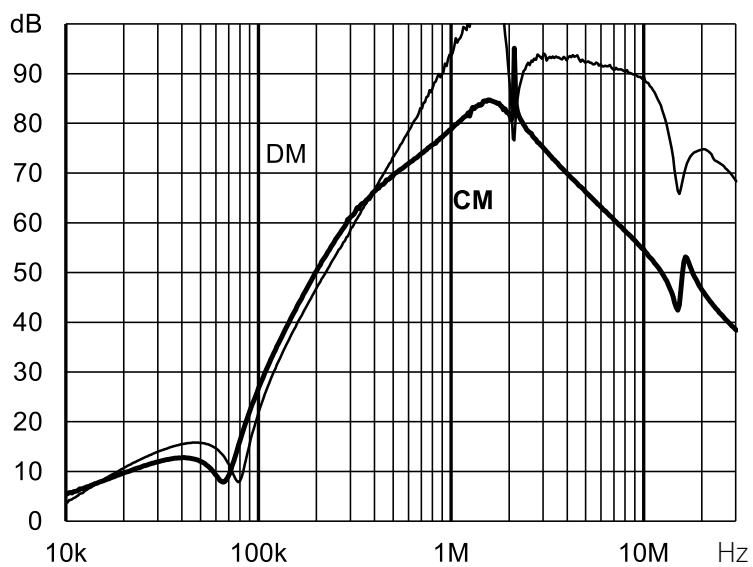
Electric Specification

| | |
|---------------------------------|------------------------|
| Leakage current (IEC60939) [mA] | 0.82 |
| Input terminal | 08 - M4 screw terminal |
| Output terminal | 08 - M4 screw terminal |
| Resistance | 680 (Kiloohm) |

Attenuation Specification

| | |
|------------------------------|-------------------|
| CM attenuation @ 150kHz [dB] | 46 (Decibels) |
| DM attenuation @ 150kHz [dB] | 39 (Decibels) |
| Inductance L1 [μH] | 1.5 (Millihenry) |
| Inductance L2 [μH] | 1.5 (Millihenry) |
| Capacitance Cx1 [μF] | 1 (Microfarad) |
| Capacitance Cx2 [μF] | 0.47 (Microfarad) |
| Capacitance Cy1 [nF] | 4.7 (Nanofarad) |
| Capacitance Cy2 [nF] | 4.7 (Nanofarad) |

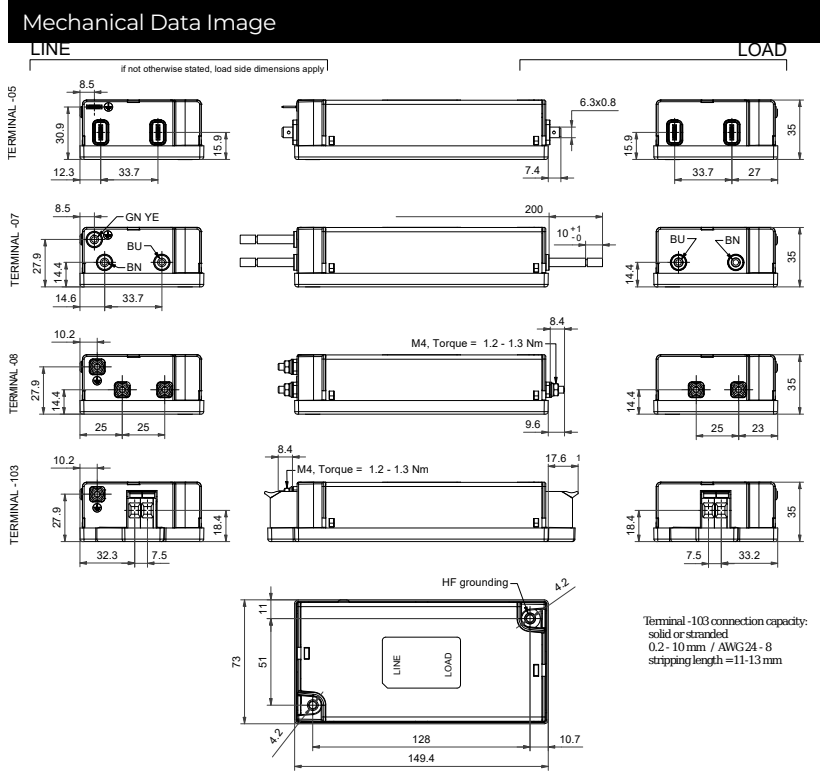
Attenuation graph



Mechanic Specification

| | |
|---------------------------|------------------------|
| Length [mm] | 149.4 |
| Width [mm] | 73 |
| Height [mm] | 35 |
| Volume [cm ³] | 382 (Cubic Centimeter) |
| NetWeight [g] | 521 (Gram) |
| Power Loss [W] | 11 (Watt) |

Schaffner schemes



Dimensions