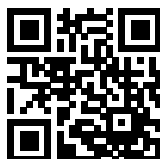


FN2502-10-05-C13

SAP Code: 822967

- Chassis mount
- 10 A EMC filter with fast-ons
- 1 Phase

[Buy article now](#)


Family Technical Specifications

| | |
|--|---|
| Rated operating voltage | 277 VAC / 400 VDC (CQC: 250 VAC / 250 VDC) |
| Operating frequency | DC to 60 Hz |
| Protection category | IP00 / IP20 for -103 terminals |
| Pollution degree | 2 acc. IEC 60664-1 |
| Vibration and shock | 3M12 acc. IEC 60721-3-3 |
| Overvoltage category | II acc. IEC 60664-1 |
| Temperature range (operation and storage) | FN2500: -40°C to +100°C (with derating >50°C) FN2520: -40°C to +85°C (with derating >50°C) |
| Cooling | Natural cooling AN |
| Climatic category | FN2500: 40/100/21 acc. IEC60068-1 FN2520: 40/085/21 acc. IEC60068-1 FN2520: 40/085/21 acc. IEC60068-1 |
| Flammability corresponding to | Plastic material: UL 94 V0 Laces for -07 version: UL 94 VW1 |
| Rated currents | 10 |
| Surge withstand | 2 kV Ph-Ph / 4 kV Ph-PE (Level 4) |
| High potential test voltage | P(DC+) → N(DC-) 1500 VDC for 2 sec* P(DC+)/N(DC-) → PE 2500 VDC for 2 sec* |
| Overload capability | 1.5 x rated current for 1 minute once per hour |
| Altitude | Derating above 2000 m |
| Certified to | UL/IEC 60939-3, CSA 22.2 No. 8-13, GB/T 15287 |
| MTBF | > 300,000 h |

* High potential test voltage: Repetition with max. 80% of specified values

Approvals & Compliances



Certifications FN2520 pending

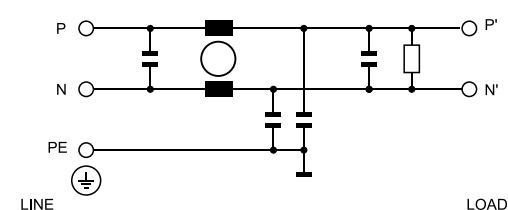
Features and Benefits

- FN2500 / FN2520 series fits perfectly within 1HU height for rack mount
- The filters are built to perform perfectly in datacenter and audio video equipment
- The shape allows convenient and space-saving installation
- Fulfills the requirements in IEC/EN 62040-1 - Uninterruptible power systems (UPS)
- Fulfills the requirements in IEC 62368-1 - Audio/Video, Information and Communication Technology Equipment
- Fulfills the requirements in IEC/EN 60335-1 - Household and similar appliances

Typical Applications

- Datacenter (at 400 VDC)
- Building technology with DC power distribution
- Robotics, collaborative robots, autonomous machines
- Audio and video equipment
- UPS - Uninterruptible power supplies

Typical electrical schematic



General Specification

| | |
|--------------------------|------------|
| Voltage AC | 277 (Volt) |
| Nominal Frequency | 50 |
| Rated Current @ambient | 10 |
| Ambient temperature [°C] | 50 |

Electric Specification

| | |
|---------------------------------|---------------------|
| Leakage current (IEC60939) [mA] | 0.87 |
| Input terminal | 05 - faston 6.3x0.8 |
| Output terminal | 05 - faston 6.3x0.8 |

Attenuation Specification

| | |
|------------------------------|---------------|
| CM attenuation @ 150kHz [dB] | 44 (Decibels) |
|------------------------------|---------------|

Mechanic Specification

| | |
|---------------------------|------------------------|
| Length [mm] | 97.7 |
| Width [mm] | 59 |
| Height [mm] | 35 |
| Volume [cm ³] | 202 (Cubic Centimeter) |
| NetWeight [g] | 240 (Gram) |

Schaffner schemes

Dimensions