

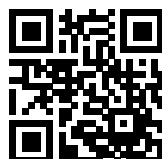
FN2020B-60-24

SAP Code: 800780



- Chassis mount
- 60 A EMC filter with screw terminals
- General
- 1 Phase

Buy article now



Family Technical Specifications

Rated voltage*	250 VAC, 50/60 Hz 250 VDC
Operating frequency	DC to 400 Hz
Altitude	2000m (above derating applies)**
Rated currents	60
High potential test voltage	P → N 1100 VDC for 2 sec (30 and 60 A types) P → PE 2000 VAC for 2 sec P → PE 2500 VAC for 2 sec (B types) P → N 760 VAC for 2 sec (1 to 20 A types)
Temperature range (operation and storage)	-25°C to +100°C (25/100/21)**
Certified to	UL 1283, CSA 22.2 No. 8 1986, IEC/EN 60939 (applies to AC and DC applications)
Flammability corresponding to	Laces for -07 version: UL 94 VW-1 Terminal plastic for -06/-08 version: UL 94 V-0 Grommet for -07 version: UL 94 V-0
Design corresponding to	UL 1283, CSA 22.2 No. 8 1986, IEC/EN 60939
Overtoltage category	II acc. IEC 60664-1
Pollution degree	2 acc. IEC 60664-1

* maximum RMS operating voltage at rated frequency or the maximum DC operating voltage ** for dedicated requests exceeding this specification (e.g. -40 °C or higher altitude) please contact your local Schaffner Sales office

Approvals & Compliances



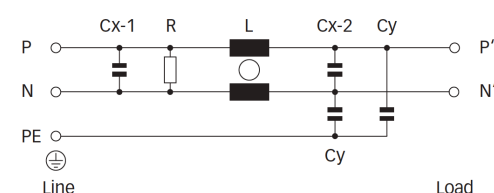
Features and Benefits

- FN 2020 filters are designed for easy and fast chassis mounting
- FN 2020 B versions without capacitors to earth comply to 1MOP for ME (medical equipment) acc. IEC 60601-1
- FN 2020 A versions with low capacitance to earth for safety critical applications with necessity for low leakage currents
- All filters provide a general purpose conducted attenuation performance, based on chokes with high saturation resistance and excellent thermal behavior
- FN 2020 filters can be used to cover a broad range of usage and they offer a good size/ amperage ratio
- FN 2020 filters are also available as two- stage filters (FN 2060, FN 2070 series) for more noisy environment
- Various terminal options allow you to select the desired connection style

Typical Applications

- Electrical and electronic equipment
- Consumer goods
- Household equipment
- Medical equipment
- Office automation equipment
- Datacom equipment

Typical electrical schematic



General Specification

Voltage AC	250 (Volt)
Nominal Frequency	50
Rated Current @ambient	60
Ambient temperature [°C]	40

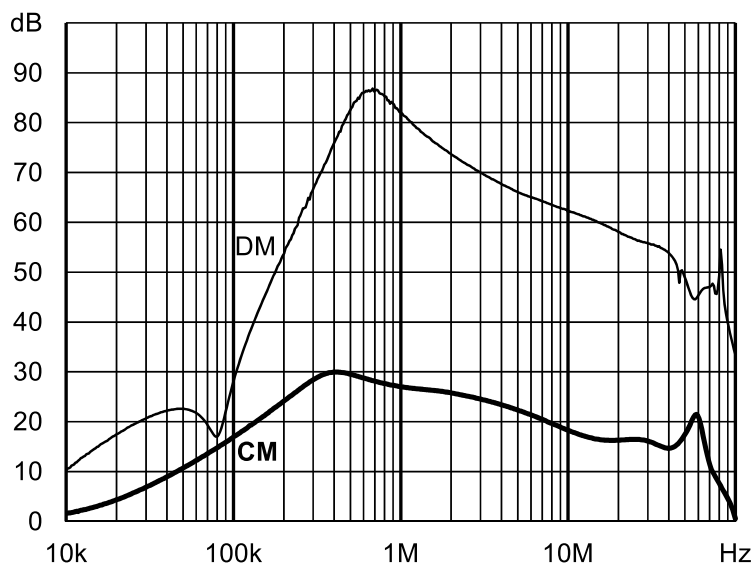
Electric Specification

Input terminal	24 - M6 screw terminal
Output terminal	24 - M6 screw terminal
Resistance	220 (Kilohm)

Attenuation Specification

DM attenuation @ 150kHz [dB]	24 (Decibels)
Inductance L1 [μ H]	1 (Millihenry)
Capacitance Cx1 [μ F]	1.5 (Microfarad)

Attenuation graph

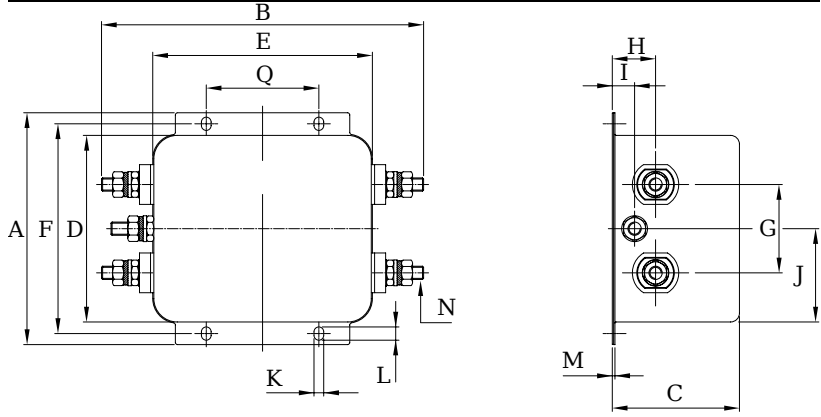


Mechanic Specification

Length [mm]	99.5
Width [mm]	84.5
Height [mm]	57.6
Volume [cm ³]	484 (Cubic Centimeter)
NetWeight [kg]	1100 (Gram)
Power Loss [W]	14.7 (Watt)

Schaffner schemes

Mechanical Data Image



Dimensions

A [mm]	105
B [mm]	145.9
C [mm]	57.6
D [mm]	84.5
E [mm]	99.5
F [mm]	95
G [mm]	40
H [mm]	19.6
I [mm]	10.1
J [mm]	42.25
K [mm]	4.4
L [mm]	6
M [mm]	1.2
N [mm]	M6
Q [mm]	51